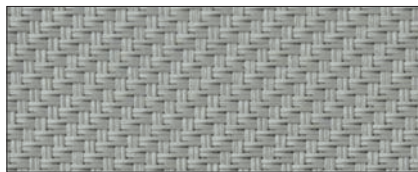


SUYS
ROLLER SHUTTERS | SCREENS

10%

**Sergé
1%**

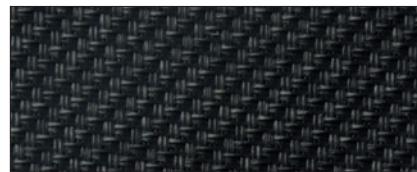
Sergé 1%



CSC007007 pearl - pearl



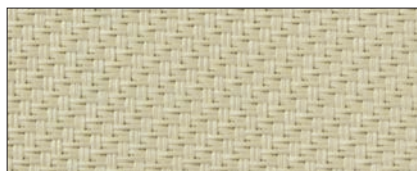
CSC001001 grey - grey



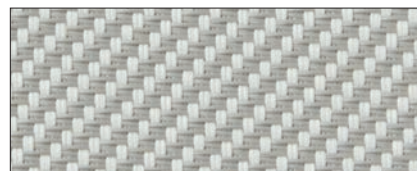
CSC010010 charcoal - charcoal



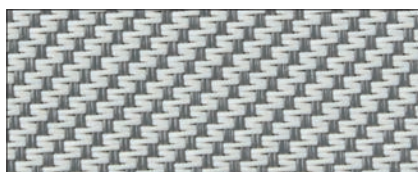
CSC002002 white - white



CSC008008 linen - linen



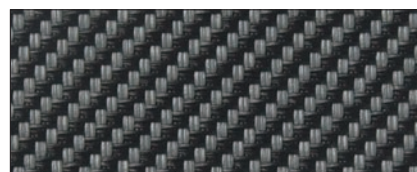
CSC002007 white - pearl






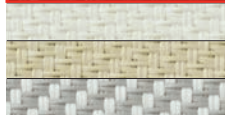




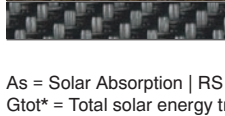
CSC001002 grey - white



CSC011011 bronze - bronze



CSC001010 grey - charcoal

front	Sergé 1%	As	Rs	Ts	Tv	G/tot. ext.*
	CSC007007 pearl - pearl	60,3	36,9	2,8	2,1	0,05
	CSC001001 grey - grey	39,9	54,2	5,9	3,7	0,06
	CSC010010 charcoal - charcoal	90,0	8,6	1,4	1,3	0,06
	CSC002002 white - white	80,2	17,4	2,4	2,2	0,06
	CSC008008 linen - linen	15,9	71,3	12,8	3,7	0,09
	CSC002007 white - pearl	45,9	48,8	5,3	4,3	0,08
	CSC001002 grey - white	53,0	44,8	2,2	2,0	0,06
	CSC011011 bronze - bronze	93,0	5,9	1,1	1,1	0,06
	CSC001010 grey - charcoal	88,3	10,5	1,2	1,2	0,09

As = Solar Absorption | RS = Solar Reflection | Ts = Solar Transmittance

Gtot* = Total solar energy transmittance | OF = Openness Factor

*Double clear glass with low emissivity coating, space filled with argon | *Gv = 0,59 U = 1,2/

Description

Sunscreen fabrics for outdoor use

Composition

42 % Fibreglass
58 % With PVC coating

Width of roll

270 cm
Or dependent on color

Packaging

Rolls of 30 m

Weave

Sergé 18/20 / ISO7211/2

Fire Classification

M1 / NF P92-503

Colour fastness

Grade > 7 / ISO105 B 04

Making up

By heat, high frequency or ultrasonic welding

Thickness

ca. 0,80 mm / ISO 5084

Weight

ca. 620 g/m² / NFEN 12127

Tearing strength

Warp: 5,90 daN / ISO 4674-1 / NF G07.146
Weft: 6,20 daN / ISO 4674-1 / NF G07.146

Elongation up to break point

Warp: 4,70 % / ISO 1421 / NF G07-001
Weft: 3,80 % / ISO 1421 / NF G07-001

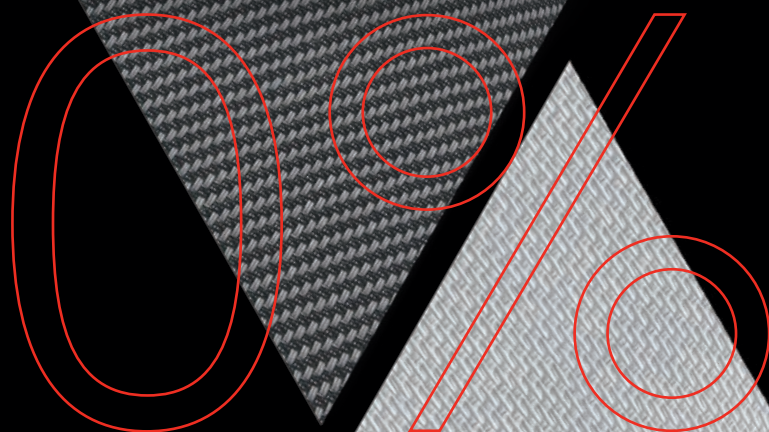
Breaking strength

Warp: 321,00 daN/5cm / ISO 1421
Weft: 277,00 daN/5cm



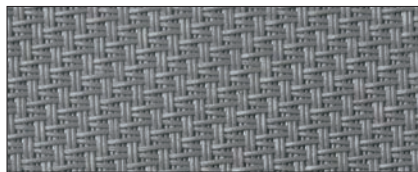
SUYS

ROLLER SHUTTERS | SCREENS

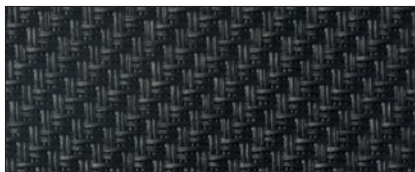


Sergé
600 BO
Lunar
0%

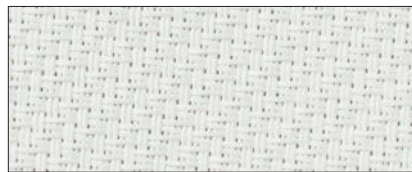
Sergé 600 BO Lunar 0%



LUN-001001 grey



LUN-010010 charcoal



LUN-002002 white



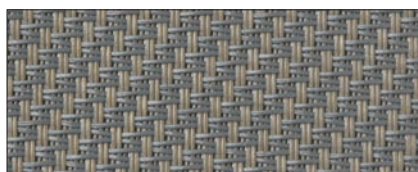
LUN-002007 white - pearl grey



LUN-007007 pearl grey





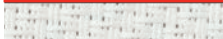





LUN-001002 grey - white



LUN-033001 oyster shell



LUN-001010 grey - charcoal

front	Sergé 600 BO Lunar 0%		As	Rs	Ts	Tv	G/tot. ext.*
	LUN-001001	grey	82,8	17,2	0	0	0,50
	LUN010010	charcoal	93,8	6,2	0	0	0,53
	LUN-002002	white	31,2	68,8	0	0	0,59
	LUN-002007	white - pearl grey	52,2	47,8	0	0	0,40
	LUN007007	pearl grey	64,5	35,5	0	0	0,44
	LUN-001002	grey - white	59,7	40,3	0	0	0,43
	LUN-033001	oyster shell	81,8	18,2	0	0	0,50
	LUN-001010	grey - charcoal	89,0	11,0	0	0	0,52

As = Solar Absorption | RS = Solar Reflection | Ts = Solar Transmittance

Gtot* = Total solar energy transmittance | OF = Openness Factor

*Double clear glass with low emissivity coating, space filled with argon | *Gv = 0,59 U = 1,2/glazing C

Description

Sunscreen fabrics for outdoor use

Composition

33 % Fibreglass
47 % With PVC coating
20 % With PVC Laminate

Width of roll

210 cm
Or dependent on color

Packaging

Rolls of 30 m

Fire Classification

M2 / NFP 92 503 / BS / 476 Pt 6 Class 0 / Opacité

Colour fastness

Grade > 7 / ISO105 B 04

Making up

By heat, high frequency or ultrasonic welding

Thickness

ca. 0,73 mm / ISO 2286-3

Weight

ca. 678 g/m² / ISO 2286-2

Tearing strength

Warp: 8,50 daN / ISO 4674-1 method 2
Weft: 9,00 daN / ISO 4674-1 method 2

Elongation up to break point

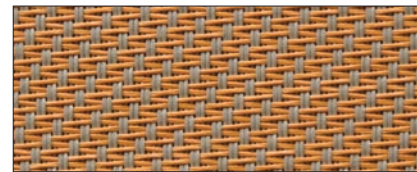
Warp: 6,40 % / ISO 1421
Weft: 7,30 % / ISO 1421

Breaking strength

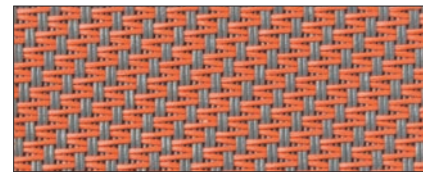
Warp: 224,20 daN/5cm / ISO 1421
Weft: 176,60 daN/5cm / ISO 1421

S

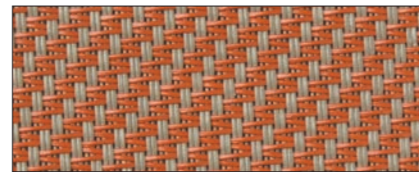
SUYS
ROLLER SHUTTERS | SCREENS



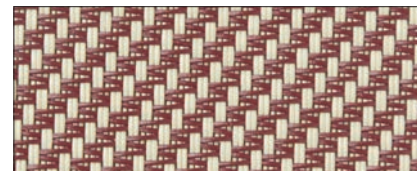
CSC032040 mango



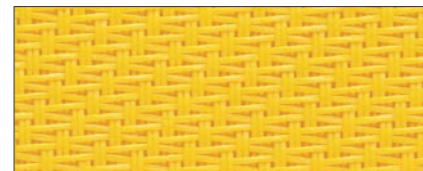
SC0109 grey - mandarin



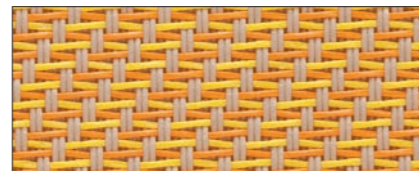
CSC033041 maroon



CSC0816 linen - bordeaux



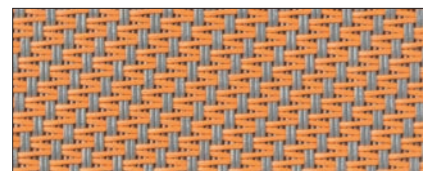
MSC0505 yellow



MSCM65 sand - gold - yellow



SC0105 grey - yellow



SC0108 grey - gold

Description
Sunscreen fabrics for outdoor use

Composition
Fibreglass (42%) with PVC coating (58%)

Width of roll
160cm - 190 cm - 220cm - 250 cm - 270cm - 285 cm - 320cm

Or dependent on color and weaver

Packaging
Rolls of 50 m

Weave
Sergé 18/14 / ISO7211/2

Fire Classification
M1 / NFPA 701

Colour fastness
Grade > 7 / ISO105 B 04

Making up
By heat, high frequency or ultrasonic welding

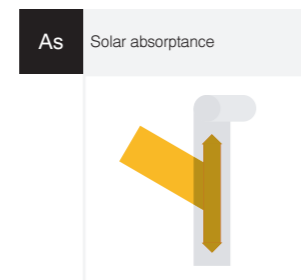
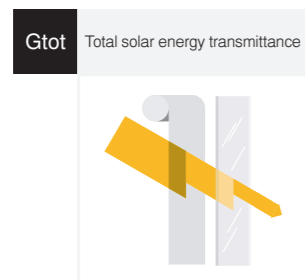
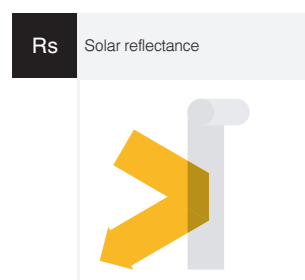
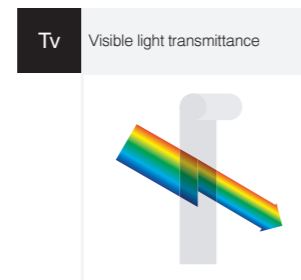
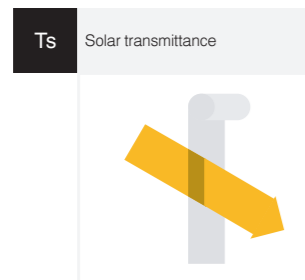
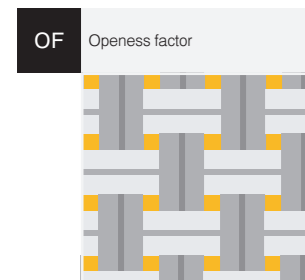
Thickness
ca. 0,75 mm / ISO 5084

Weight
ca. 535g / NFEN 12127

Tearing strength
Warp: 8,50 daN / ISO 4674-1 / NF G07.146
Weft: 7,50 daN / ISO 4674-1 / NF G07.146

Elongation up to break point
Warp: 3,10 % / ISO 1421 / NF G07-001
Weft: 2,75 % / ISO 1421 / NF G07-001

Breaking strength
Warp: 220,00 daN/5cm / ISO 1421
Weft: 200,00 daN/5cm

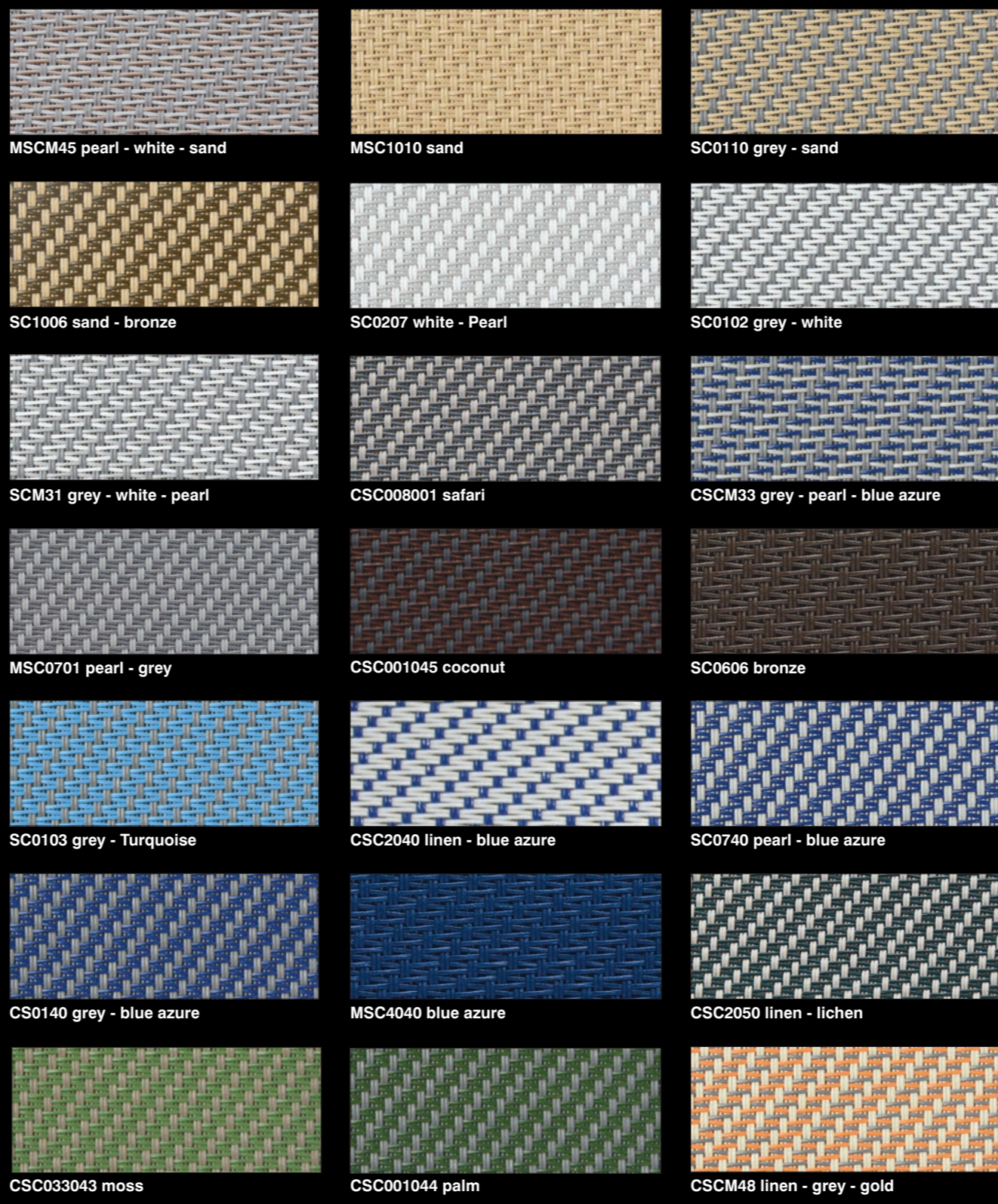
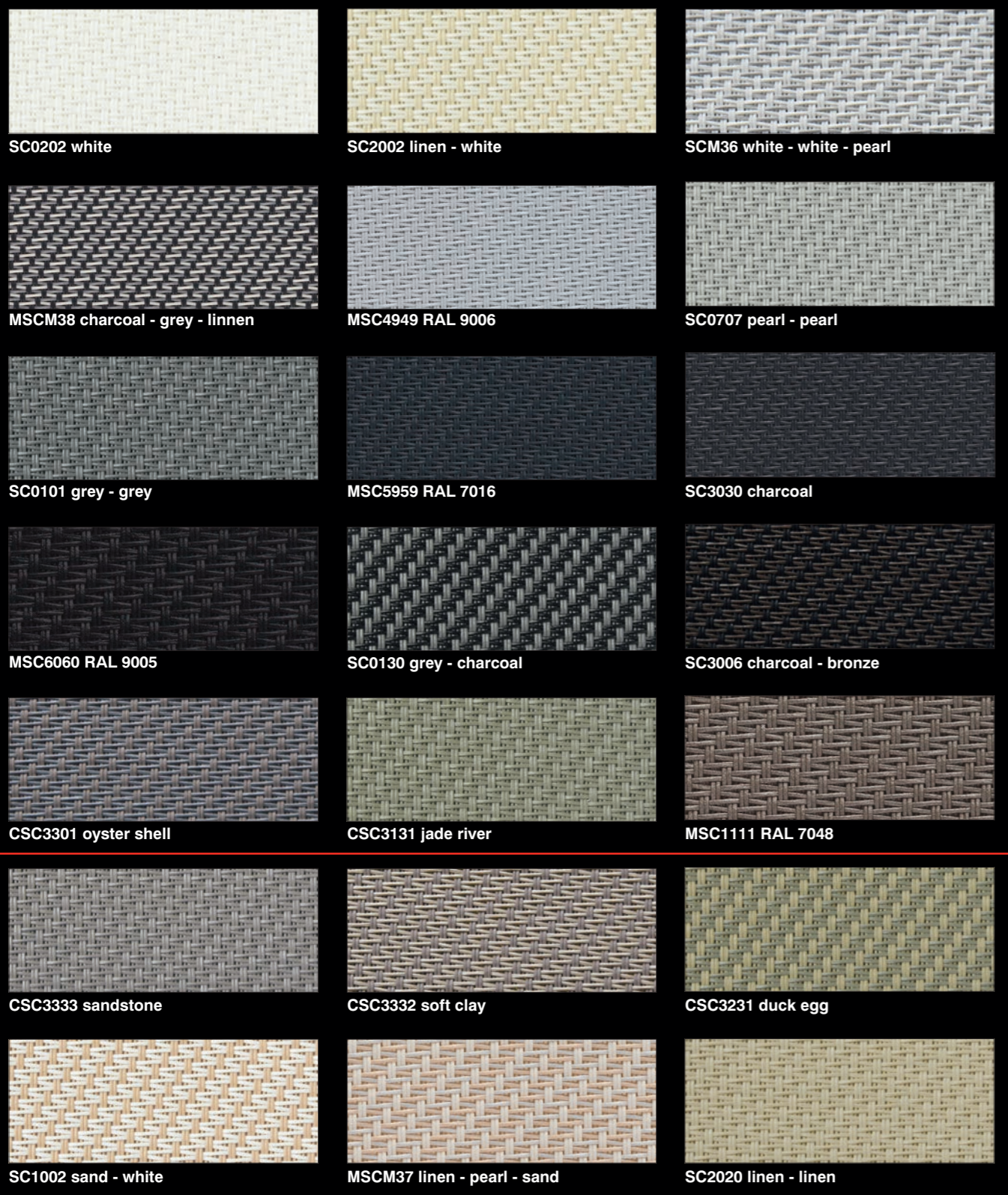


5%

Sergé
600
5%



Sergé 600 5%



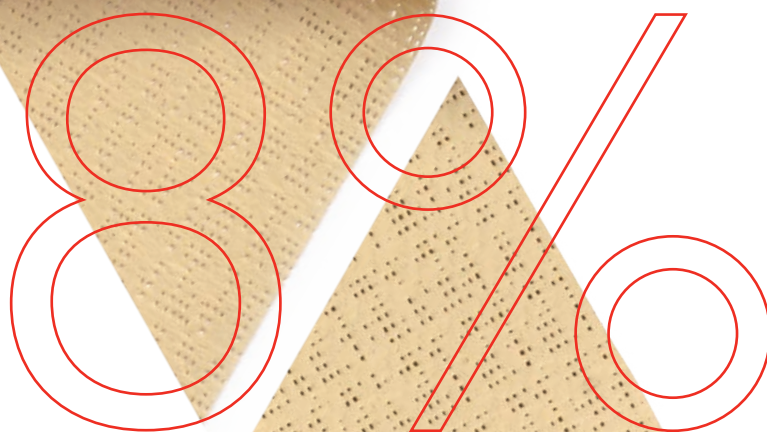
Front	Sergé 600 5%	Colour	As	Rs	Ts	Tv	G/tot. ext.*
	SC0202	white	13,2	65,9	21,0	21,2	0,15
	SC2002	linen - white	26,4	58,2	15,5	13,7	0,13
	SCM36	white - white - pearl	27,7	59,8	12,4	11,6	0,11
	MSCM38	charcoal - grey - linen	74,0	21,0	5,0	5,0	0,10
	MSC4949	RAL 9006	53,0	37,0	10,0	9,0	0,11
	SC0707	pearl - pearl	51,7	38,3	10,1	8,4	0,11
	SC0101	grey - grey	81,3	15,1	3,5	3,6	0,09
	MSC5959	RAL 7016	89	7,0	4,0	4,0	0,05
	SC3030	charcoal	91,4	5,0	3,6	3,6	0,10
	MSC6060	RAL 9005	92	4,0	4,0	4,0	0,05
	SC0130	grey - charcoal	86,5	9,9	3,6	3,6	0,09
	SC3006	charcoal - bronze	87,4	6,5	6,1	6,1	0,09
	CSC3301	oyster shell	74,7	17,0	8,3	8,0	0,12
	CSC3131	jade river	75,0	17,9	7,1	7,0	0,11
	MSC1111	RAL 7048	77	18	5	6	0,10
	CSC3333	sandstone	72,4	20,5	7,1	6,8	0,11
	CSC3332	soft clay	67,5	24,7	7,8	7,3	0,11
	CSC3231	duck egg	70,4	22,5	7,1	6,6	0,11
	SC1002	sand - sand	39,1	49,2	11,7	10,2	0,11
	MSCM37	linen - pearl - sand	40,0	45,0	15,0	12,0	0,13
	SC2020	linen - linen	32,5	52,5	14,9	12,9	0,13
	MSCM45	pearl - white - sand	39,0	45,0	16,0	14,0	0,10
	MSC1010	sand	54,1	36,5	9,4	7,7	0,11
	SC0110	grey - sand	68,8	26,5	4,7	4,5	0,09
	SC1006	sand - bronze	73,2	21,1	5,7	5,0	0,09
	SC0207	white - pearl	39,0	45,0	16,0	17,0	0,11
	SC0102	grey - white	56,2	37,2	6,7	6,6	0,09
	SCM31	grey - white - pearl	63,0	33,2	3,9	3,6	0,08
	CSC008001	safari	61,5	29,8	8,7	7,9	0,11
	CSCM33	grey - pearl - blue azure	73,4	23,0	3,6	3,0	0,09
	MSC0701	pearl - grey	64,0	25,0	11,0	10,0	0,13
	CSC001045	coconut	78,3	14,4	7,3	7,1	0,12
	SC0606	bronze	88,0	8,1	3,9	3,8	0,10
	SC0103	grey - turquoise	63,8	28,9	7,3	6,3	0,10
	CSC2040	linen - blue azure	61,0	30,0	9,0	5,0	0,09
	SC0740	pearl - blue azure	61,5	31,0	7,5	4,4	0,10
	SC0140	grey - blue azure	76,0	18,4	5,6	4,7	0,10
	MSC4040	blue azure	61,7	26,2	12,1	4,9	0,13
	CSC2050	linen - lichen	70,6	21,1	8,3	7,8	0,12
	CSC033043	moss	75,4	18,2	6,4	6	0,11
	CSC001044	palm	80,3	12,6	7,1	7,0	0,12
	CSCM48	linen - grey - gold	54,0	37,0	9,0	7,0	0,12
	CSC032040	mango	56,8	34,2	9,0	6,8	0,11
	SC0109	grey - mandarin	65,6	27,7	6,8	5,7	0,10
	CSC033041	maroon	65,5	25,9	7,6	6,48	0,11
	CSC0816	linen - bordeaux	63,4	26,1	10,5	8,4	0,13
	MSC0505	yellow	28,8	49,7	21,5	20,2	0,17
	MSCM65	sand - gold - yellow	46,3	43,2	10,6	7,0	0,11
	SC0105	grey - yellow	64,6	29,0	6,4	6,2	0,11
	SC0108	grey - gold	65,5	29,5	4,9	4,3	0,09

As = Solar Absorption | RS = Solar Reflection | Ts = Solar Transmittance
 Gtot* = Total solar energy transmittance | OF = Openness Factor
 *Double clear glass with low emissivity coating 4/16/4EN14501 | *Gv = 0,59 U = 1,2/





SUYS
ROLLER SHUTTERS | SCREENS



88%

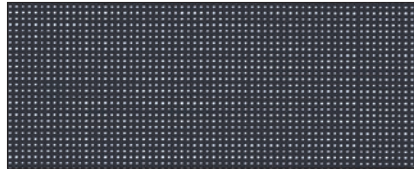


**Soltis
Perform 88
8%**

Soltis Perform 88 8%



S88-2044 white



S88-2047 anthracite

front	Soltis Perform 88		As	Rs	Ts	Tv	G/tot. ext.*
	S88-2044	white	9	67	24	9	0,17
	S88-2047	anthracite	83	8	9	9	0,13
	S88-2171	boulder	49	38	13	9	0,13
	S88-2048	alu	43	44	13	8	0,12
	S88-2167	concrete	75	16	9	8	0,13
	S88-2053	black	86	6	8	8	0,13
	S88-2175	champagne	14	62	24	8	0,17
	S88-2135	sandy beige	44	42	14	8	0,13
	S88-50265	hemp	41	44	15	9	0,14
	S88-2012	pepper	59	29	12	9	0,13
	S88-50329	ash brown	64	26	10	8	0,12
	S88-2043	bronze	79	12	9	8	0,13
	S88-50333	bamboo	50	33	17	9	0,16
	S88-50332	apricot	14	52	24	8	0,18
	S88-50308	paprika	51	33	16	8	0,15
	S88-50306	bermuda	50	37	13	8	0,13
	S88-50335	fig	73	17	10	9	0,13

Description

Sunscreen fabrics for outdoor use

Composition

PES / PVC

Width of roll

177 cm - 267 cm

Or dependent on color

Weave

Précontraint Serge Ferrari

Fire Classification

B1 / DIN 4102-1, M1 / NFPA 701

Colour fastness

-

Making up

By heat, high frequency or ultrasonic welding

Thickness

ca. 0,45 mm

Weight

ca. 360 g/m²

Tearing strength

14 / 14 daN / DIN 53.363

Elongation up to break point

-

Breaking strength

Warp: > 145 daN / 5 cm

Weft: > 145 daN / 5 cm / EN ISO 1421